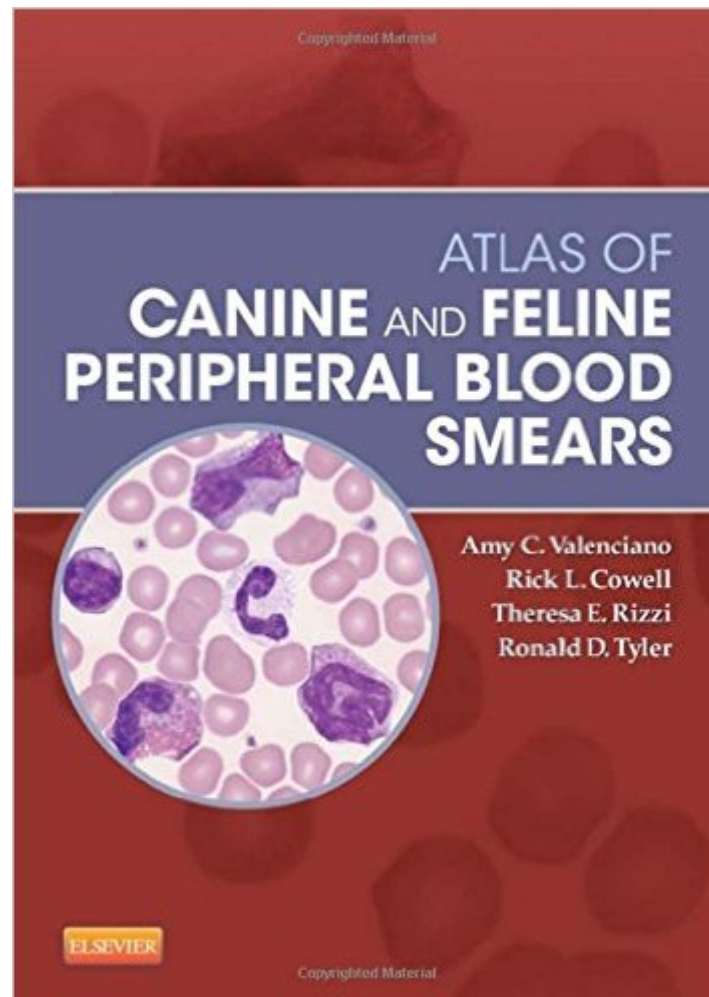


The book was found

Atlas Of Canine And Feline Peripheral Blood Smears, 1e (Small Animal Laboratory Essentials)



Synopsis

An illustrated guide to the morphology of blood cells, *Atlas of Canine and Feline Peripheral Blood Smears* covers patient assessment for common hematologic disorders and diseases in dogs and cats. Over 1,000 full-color photomicrographs depict abnormalities within each blood cell line, with multiple pictures of each morphologic abnormality and variations in their appearance. Written by pathology experts Amy Valenciano, Rick Cowell, Theresa Rizzi, and Ronald Tyler, this concise reference will enhance your skills as you interpret blood smears and recognize hematological cellular response to inflammation, infection, and toxicity. "Everything you might encounter looking at dog or cat blood smears is right there, clearly classified and noted (more than 1000 pictures!). Pitfalls and artefacts are clearly explained. The format (spiral binding) makes it the obvious accessory for your microscope. A good investment." Reviewed by: Vet's Today Date: July 2014

Over 1,000 photomicrographs facilitate microscopic analysis and interpretation of the cellular components of the blood. Full-color, high-resolution images facilitate identification of different blood cell types, numbers, anomalies and conditions. Multiple representations of morphologic abnormalities aid in recognition of conditions where variations in appearance commonly occur. Practical information includes an overview of laboratory methods, equipment and supplies, sample collection, staining and handling, and diagnostic interpretation of blood smears. Coverage of 125 topics ranges from the morphology of erythrocytes to chronic myeloid leukemia. Spiral binding allows the book to lay open next to the microscope, making it a quick and easy reference while on the job.

Book Information

Series: Small Animal Laboratory Essentials

Spiral-bound: 284 pages

Publisher: Mosby; 1 Spi edition (November 12, 2013)

Language: English

ISBN-10: 0323044689

ISBN-13: 978-0323044684

Product Dimensions: 7.9 x 0.6 x 10.1 inches

Shipping Weight: 1.5 pounds (View shipping rates and policies)

Average Customer Review: 5.0 out of 5 stars [See all reviews](#) (5 customer reviews)

Best Sellers Rank: #1,282,713 in Books (See Top 100 in Books) #238 in [Books > Textbooks >](#)

[Medicine & Health Sciences > Veterinary Medicine > Small Animal](#) #423 in [Books > Medical](#)

[Books > Veterinary Medicine > Small Animal Medicine](#) #624 in [Books > Textbooks > Medicine &](#)

Customer Reviews

Very detailed book of cytology. Good reference source book. Nice Photos and with spiral binding the book lays flat on the table.

I love this book and use it often. It is very helpful for my clinical pathology class and I highly recommend it to anyone!

Easy to use, nice pics and a great tool if you want to help others to understand the basics about blood smears.

Great photos, is a real asset in me reviewing blood slides.

Great pictures, helpful to review for exams

[Download to continue reading...](#)

Atlas of Canine and Feline Peripheral Blood Smears, 1e (Small Animal Laboratory Essentials) Blood Type Diet: An Essential Guide For Eating Based On Your Blood Type (blood type, blood type diet, blood type a, blood type o, blood type ab, blood type b, blood type diet success,) BSAVA Manual of Canine and Feline Ophthalmology (BSAVA British Small Animal Veterinary Association) By : BSAVA Manual of Canine and Feline Advanced Veterinary Nursing (BSAVA British Small Animal Veterinary Association) Second (2nd) Edition BSAVA Manual of Canine and Feline Clinical Pathology (BSAVA British Small Animal Veterinary Association) Dermatology for the Small Animal Practitioner Exotics - Feline - Canine The Neuropathy Cure: How to Effectively Treat Peripheral Neuropathy (Peripheral Neuropathy, Diabetes, Intervention Therapy, Spinal Cord, Drug Therapy, Chronic Pain, Biofeedback) Canine and Feline Geriatric Oncology: Honoring the Human-Animal Bond Clinical Atlas of Canine and Feline Ophthalmic Disease Color Atlas of Canine and Feline Ophthalmology Essentials of Canine and Feline Electrocardiography: Interpretation and Treatment High Blood Pressure Cure: How To Lower Blood Pressure Naturally in 30 Days (Alternative Medicine, Natural Cures, Natural Remedies, High Blood Pressure ... Cures for High Blood Pressure, High BI) Color Atlas of Small Animal Anatomy: The Essentials Canine and Feline Behavior and Training: A Complete Guide to Understanding our Two Best Friends (Veterinary Technology) Veterinary Dermatopathology: A Macroscopic and Microscopic Evaluation of Canine and Feline

Skin Disease Blackwell's Five-Minute Veterinary Consult Clinical Companion: Canine and Feline
Infectious Diseases and Parasitology Canine and Feline Anesthesia and Co-Existing Disease
BSAVA Manual of Canine and Feline Radiography and Radiology: A Foundation Manual Canine
and Feline Nephrology and Urology, 2e Small Animal Internal Medicine, 5e (Small Animal Medicine)

[Dmca](#)